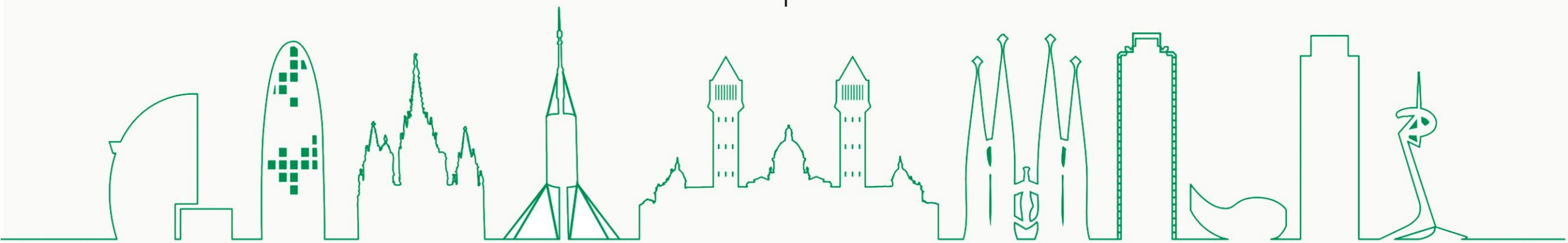




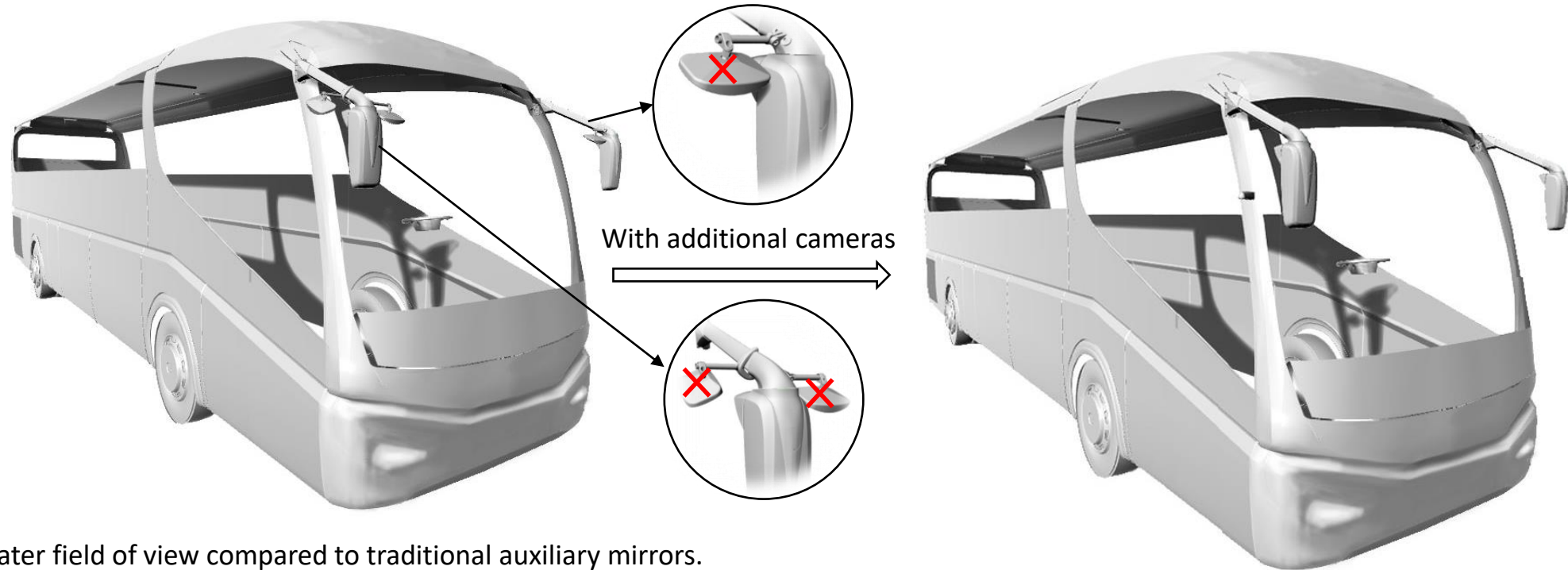
Camera System and  
Monitor for Cat.V & VI  
according R46



Since 1942

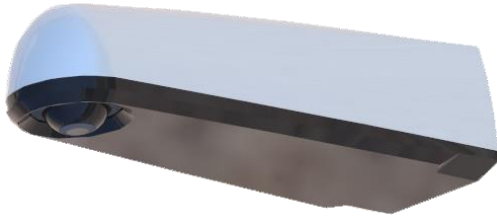
[www.arcol.es](http://www.arcol.es)

# Advantages



- Greater field of view compared to traditional auxiliary mirrors.
- Possibility of displaying Cat.V and VI on a single image increasing comfort for the driver
- Removal of auxiliary mirrors providing an aesthetic improvement and avoidance of the risk of collision due to protruding elements, reducing breakage.
- Possibility of installing additional cameras such as reverse/parking or passenger access doors, up to a total of 4 cameras on the same monitor.

## Installation possibilities



- **Bracket:**

The camera is fixed to the body by means of a bracket in order to optimize the visibility of the two categories.

Both viewing areas are displayed on the monitor in a single image.



- **Mirror integration:**

Placing the camera on our Diagonal, Amida 1.5 or 340 series mirror body.

Both viewing areas are displayed on the monitor in a single image.

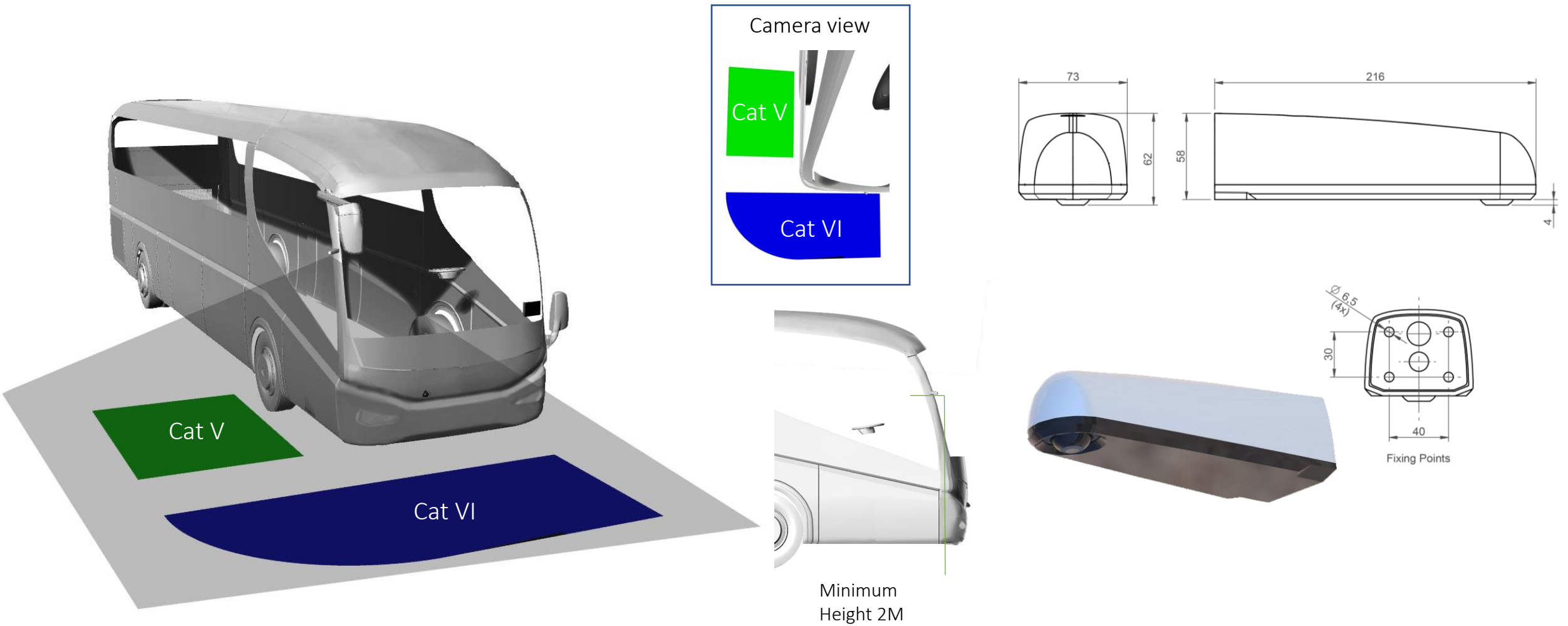


- **Front and side camera**

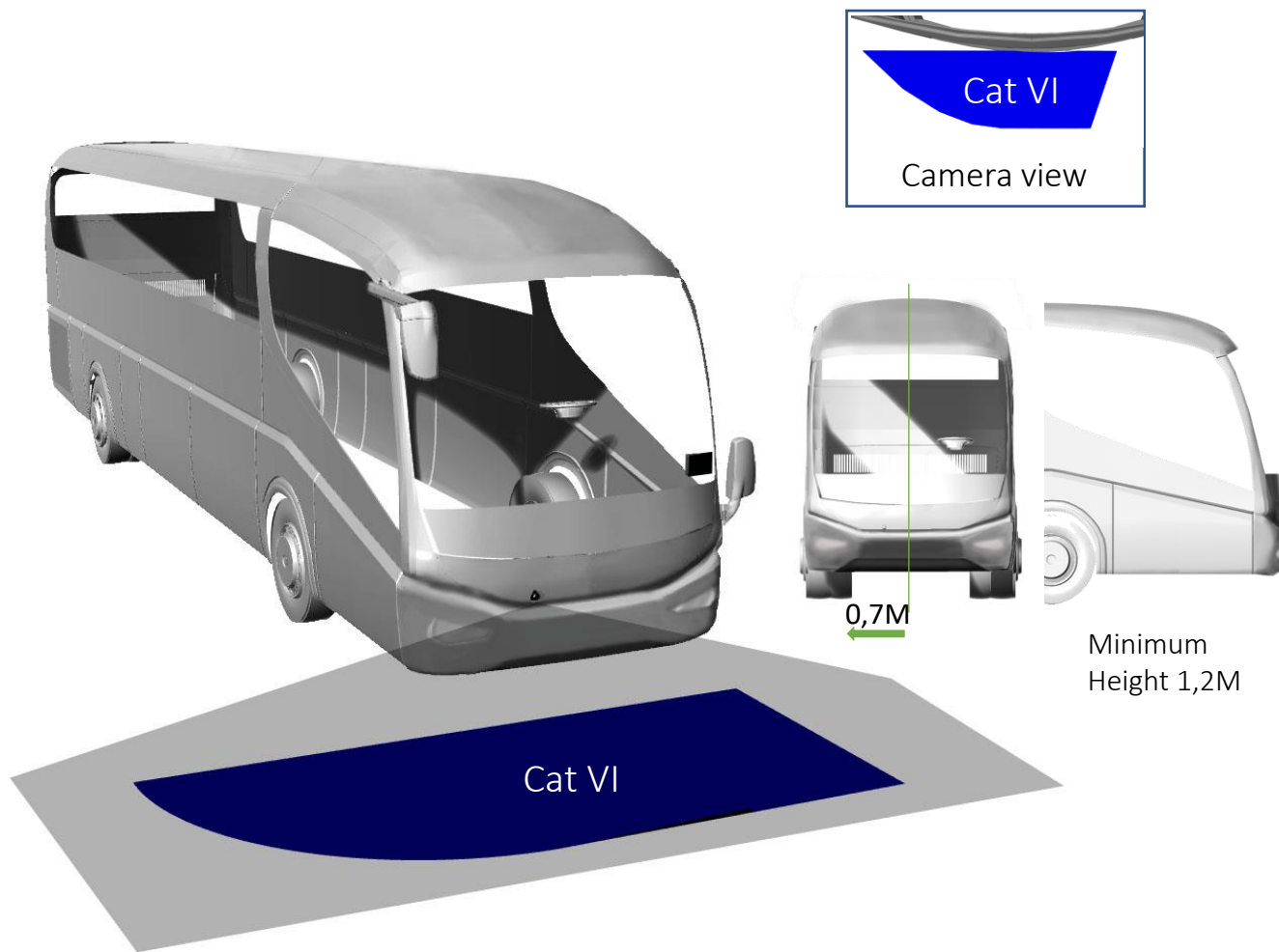
One camera is attached to the front bumper and one to the side of the vehicle.

Each viewing area is displayed in a separate image.

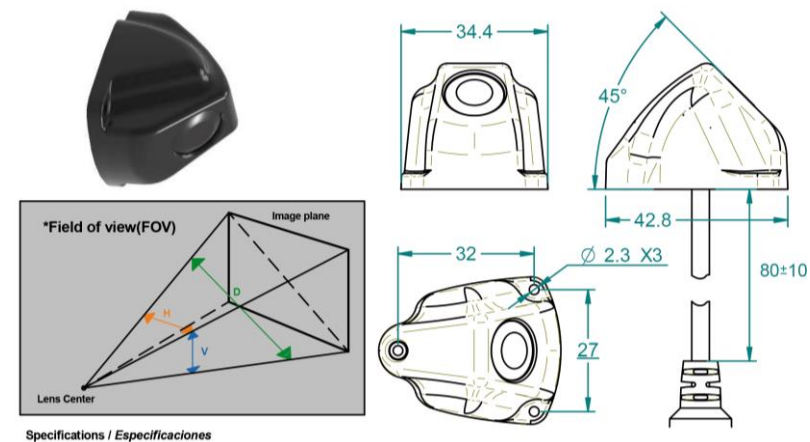
# Bracket



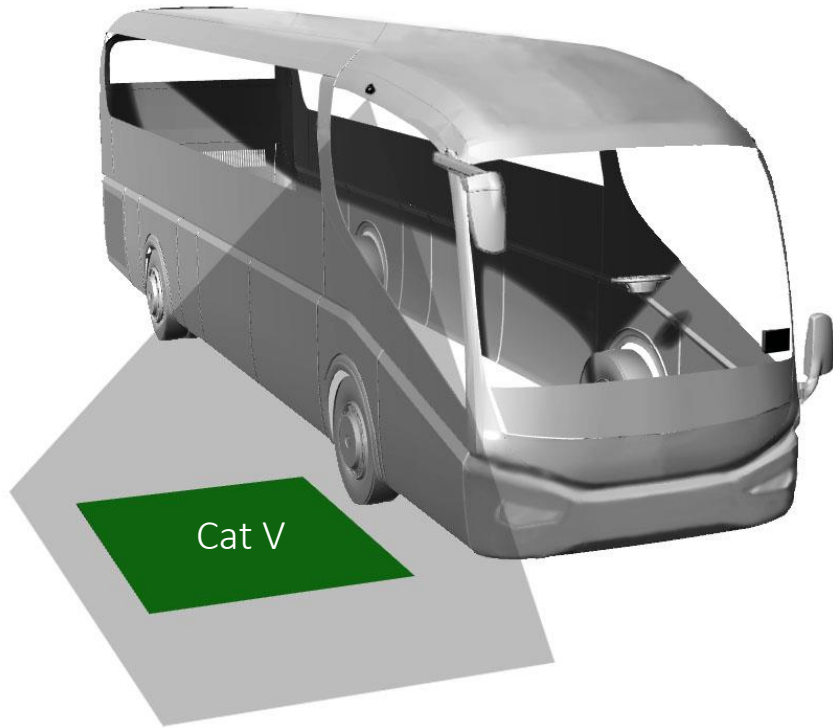
## 45° Camera placed on front bumper



Field of view (FOV) V:105° H:132° D:160°



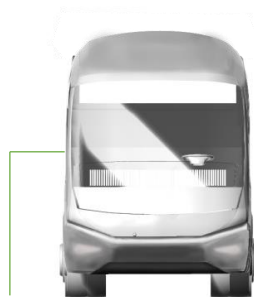
## CS-Camera placed on the side



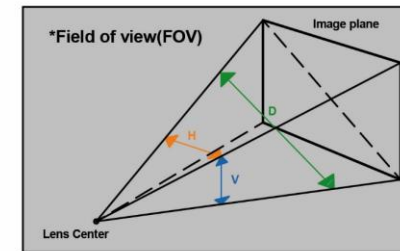
Camera view

Cat V

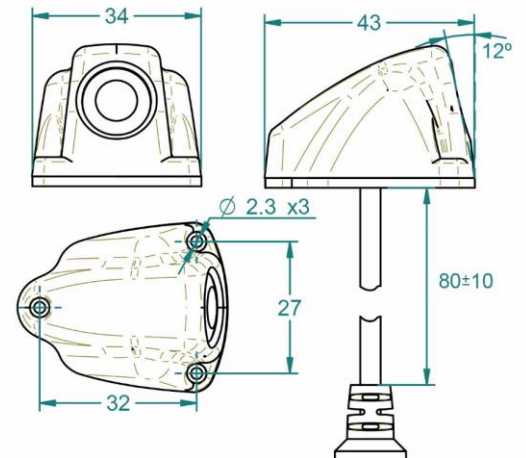
Minimum  
Height 1,5M



Field of view (FOV) V:105° H:132° D:160°

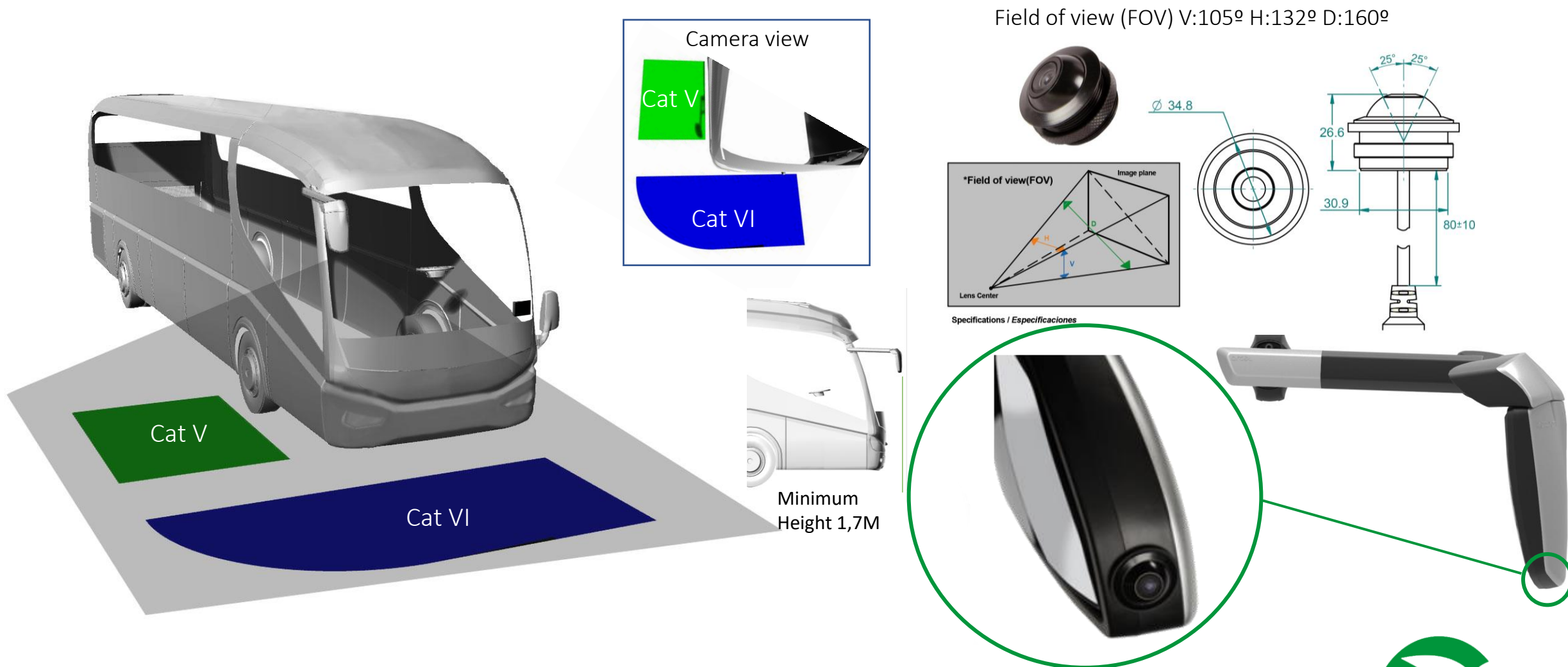


Specifications / Especificaciones





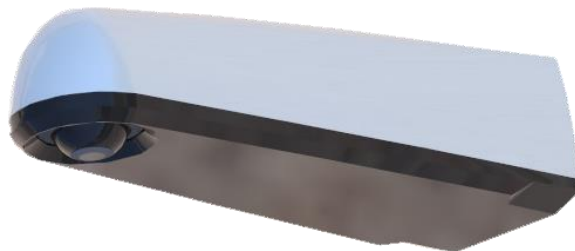
# Eyeball camera integration in mirror body



# Components



Monitor 7"



Bracket



R .46  
R .10

Homologation



Eyeball



CS



45°

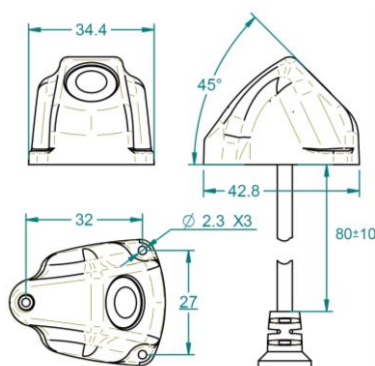




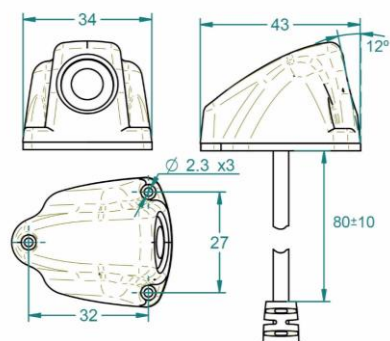
# Datasheet Cameras



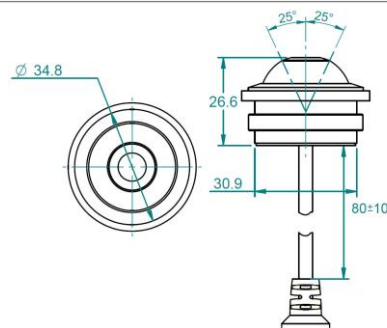
Camera 45°



Camera CS



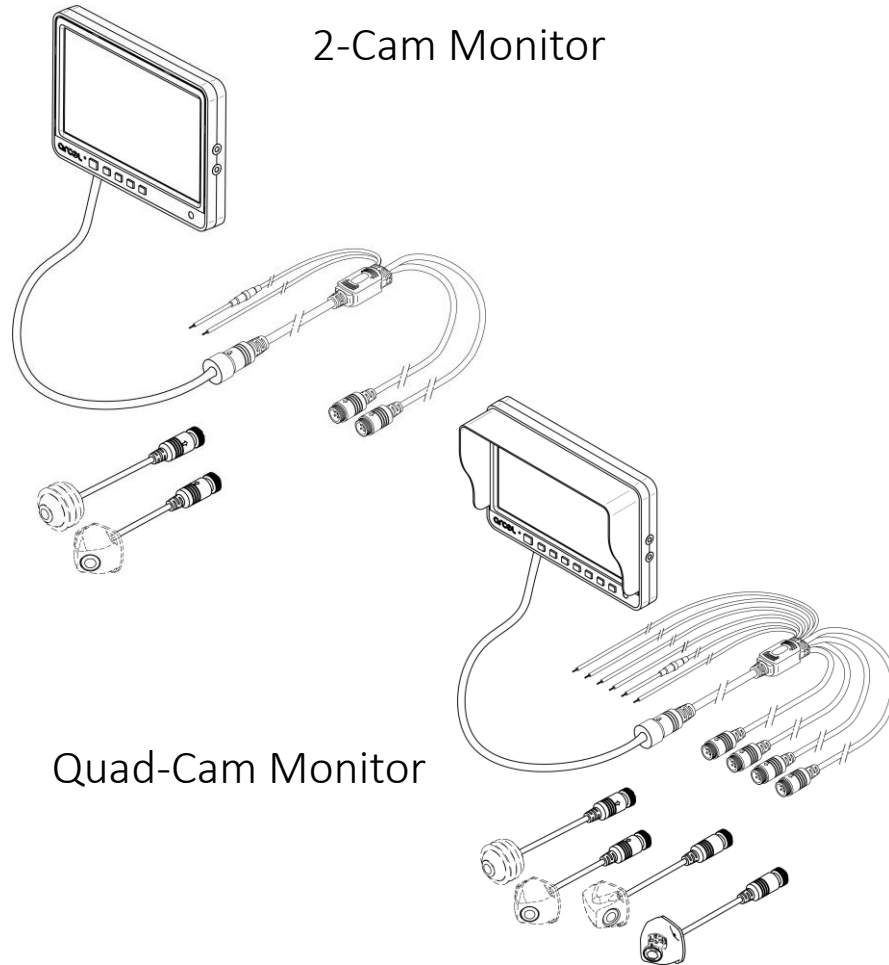
Camera Eyeball



Description <i>Descripción</i>	External Camera for Bus, Motorhome, Mini and Midibus and other vehicles <i>Cámara exterior para Autobús, Autocaravanas, Mini o Midibús y otros vehículos</i>		
General features <i>Características generales</i>	CMOS sensor / <i>Sensor CMOS</i> Vibration proof / <i>Resistente a vibraciones</i> PAL or NTSC system / <i>Sistema PAL o NTSC</i> Waterproof IP67/ <i>Impermeabilidad IP67</i> Flicker detection and avoidance / <i>Detección de parpadeo</i> Parking lines and Mirror images optional/ <i>Líneas de Parking e Imagen espejo opcional</i>		
Color <i>Color</i>	Black <i>Negro</i>		
Storage and Maintenance <i>Almacenamiento y Mantenimiento</i>	Use a damp cloth to clean the camera/ Storage temperature -40°C 70°C <i>Utilize un paño húmedo para limpiar la cámara/Temperatura de almacenamiento -40°C 70°C</i>		
Voltage <i>Voltaje</i>	DC 12V		
Power consumption <i>Consumo</i>	100mA ± 10 %		
Resolution <i>Resolución</i>	720 H x 486 V (NTSC) 720H x 576 V (PAL)		
Data Rate <i>Velocidad de datos</i>	60 fields/sec (NTSC) 50 fields/sec (PAL)		
Minimum illumination <i>Iluminación mínima</i>	0,03 Lux		
* Field of view (FOV) <i>Ángulo de visión (FOV)</i>	V: 105°	H: 132°	D: 160°
Operating temperature range <i>Rango operacional de temperaturas</i>	Between -30°C and 60°C <i>Entre -30°C y 60°C</i>		
Weight <i>Unidad</i>	47 g		
Product Warranty Period <i>Periodo de Garantía del Producto</i>	2 years limited warranty <i>2 años de garantía limitada</i>		
RoHS compliance <i>RoHS conformidad</i>	Yes <i>Sí</i>		
REACH compliance <i>REACH conformidad</i>	Yes <i>Sí</i>		



# Datasheet Monitors Dual-Cam / Quad-Cam

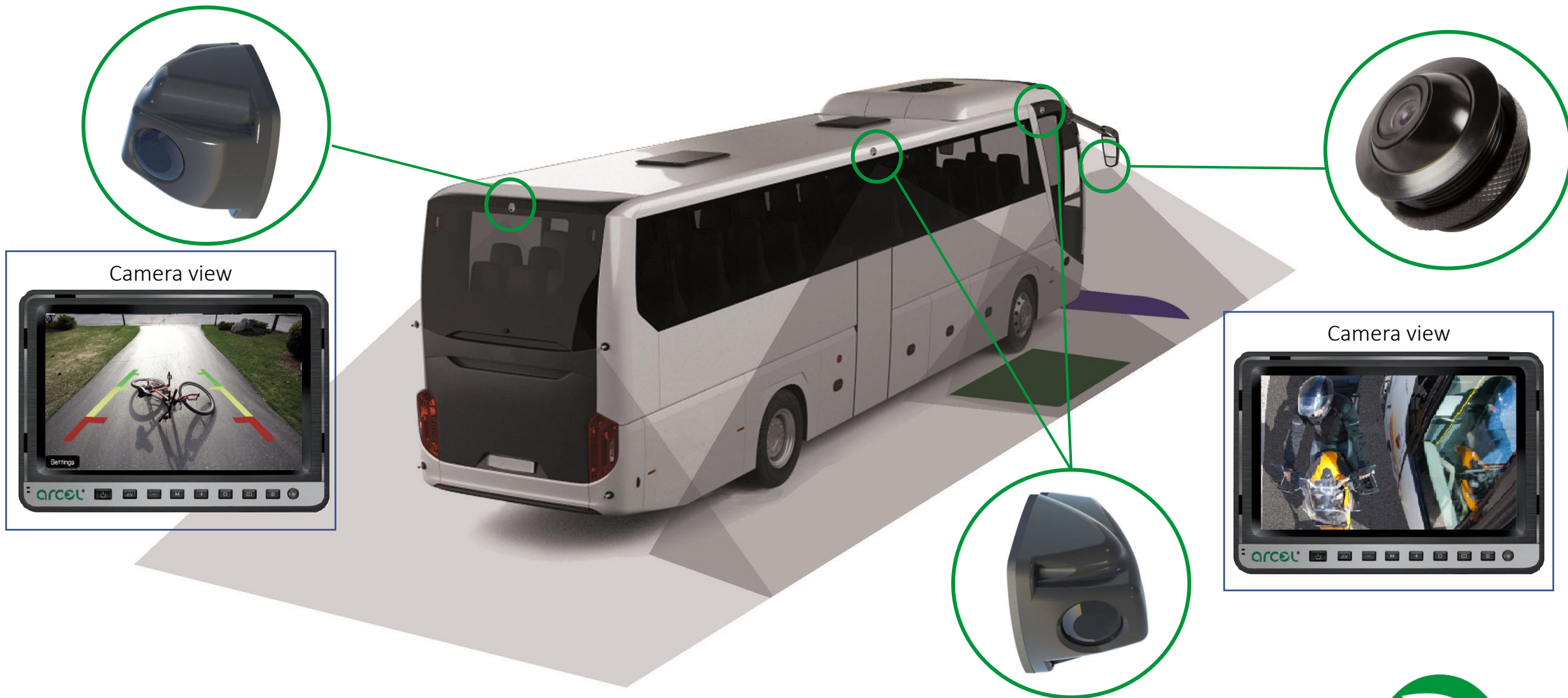


2-Cam Monitor

Quad-Cam Monitor

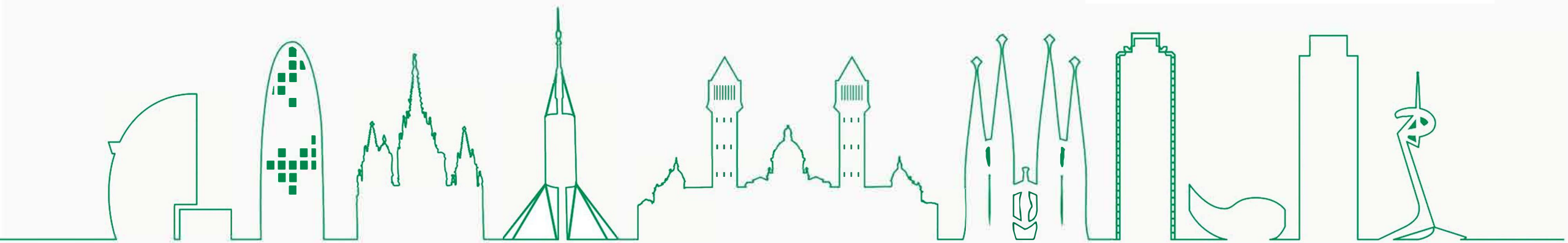
Description Descripción	Monitor 7" for Bus, Motorhome, Mini and Midibus Monitor 7" para Autobus, Autocaravanas, Mini o Midibus
General features Características generales	Vibration proof PAL/NTSC (Auto) system Sunlight resistance glass OSD Menu Optionals Parking Lines QUAD Function  Resistente a vibraciones Sistema PAL/NTSC (Auto) Vidrio resistente a rayos UV Menú OSD Líneas de parking opcionales Función QUAD
Color Color	Black Negro
Maintenance Mantenimiento	Use a damp cloth with water Usar un paño húmedo con agua
Voltage Voltaje	DC12V~DC32V
Power consumption Consumo	12~17W ±5%
Screen size Tamaño de pantalla	7" (16:9)
Resolution Resolución	RGB 800x480p
Brightness Luminosidad	450 cd/m2
AV inputs Entradas de Video	4
Trigger wires Señal activación	4
Operating temperature range Rango operacional de temperaturas	Between -20°C and 70°C Entre -20°C y 70°C
Unit Weight Peso Unidad	360 gms.
Product Warranty Period Periodo de Garantía del Producto	2 years limited warranty 2 años de garantía limitada
Devices for Indirect Vision Approval Number Número Homologación Dispositivos de Visión Indirecta	S-E9-02.6485
Electromagnetic Compatibility Approval Number Número Homologación de Compatibilidad Electromagnética	E9-10R-04.6860
RoHS compliance RoHS conformidad	Yes Si
REACH compliance REACH conformidad	Yes Si

## Rear-Cam & Side-Cam Option





CONSEJO REGULADOR DE LA INDUSTRIA DE LA CONSTRUCCION DE VEHICULOS AUTOMOVILES  
CONSEJO REGULADOR DE LA INDUSTRIA DE LA CONSTRUCCION DE VEHICULOS AUTOMOVILES  
CONSEJO REGULADOR DE LA INDUSTRIA DE LA CONSTRUCCION DE VEHICULOS AUTOMOVILES



Autos 1900

Autos 1900