

## Product Information

Full LED rear combination light  
L 3600 12V & 24V



November 2020

# Specification

L 3600 - Full LED rear combination light



# Specification

## L 3600 - Full LED rear combination light

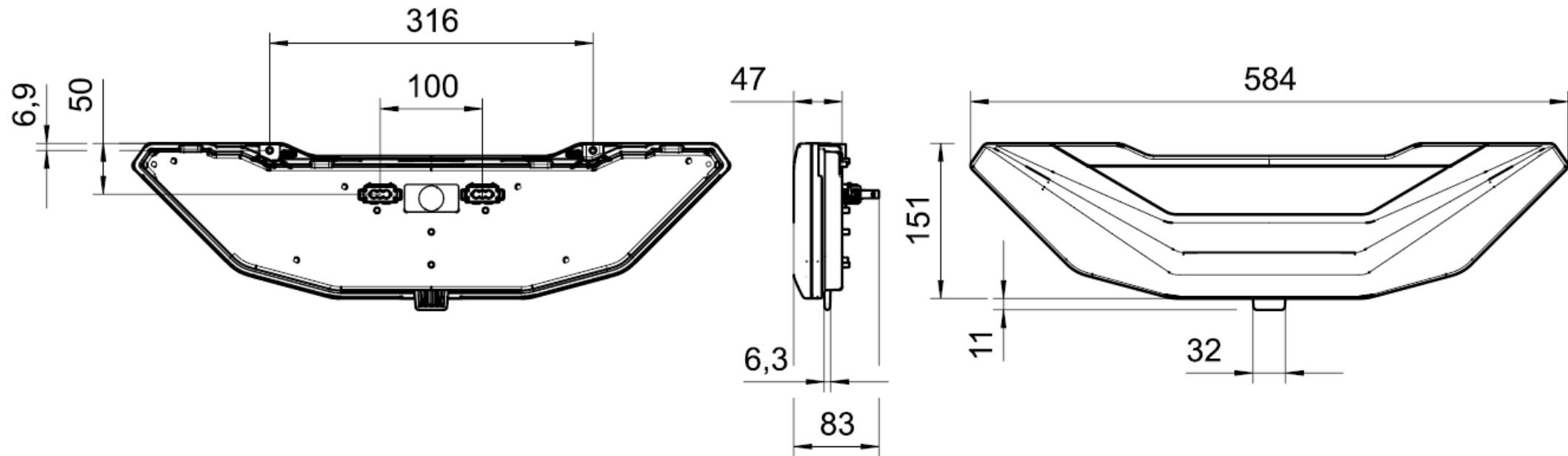
- Full LED Technology
- Integrated failure control and resistor simulation for the turn indicator (for 12V & 24V)
- Integrated power resistors for all other functions (only for 12V)
- Sequential turn indicator or standard turn indicator (depends on the assembly position)
- Operating Voltage: 12V or 24V
- Functions: Stop, Tail, Turn Ind., Fog, Reverse
- Integrated Connectors 2 x Delphi 10718828 (male) for connector 15327870 (female)
- IP Class: IP67
- Membrane integrated in housing



# Drawing

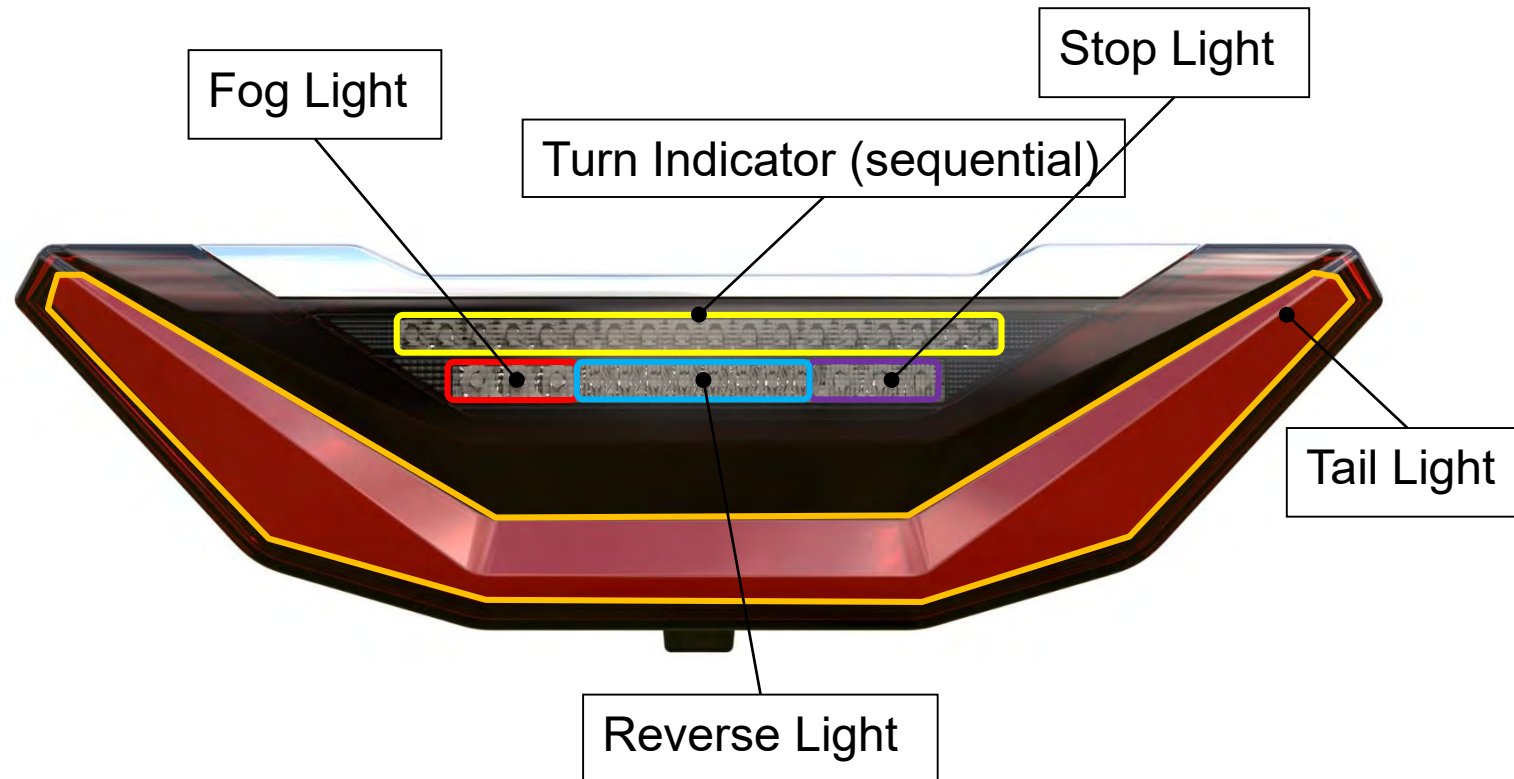
## L 3600 - Full LED rear combination light

4



# Functions

## L 3600 - Full LED rear combination light



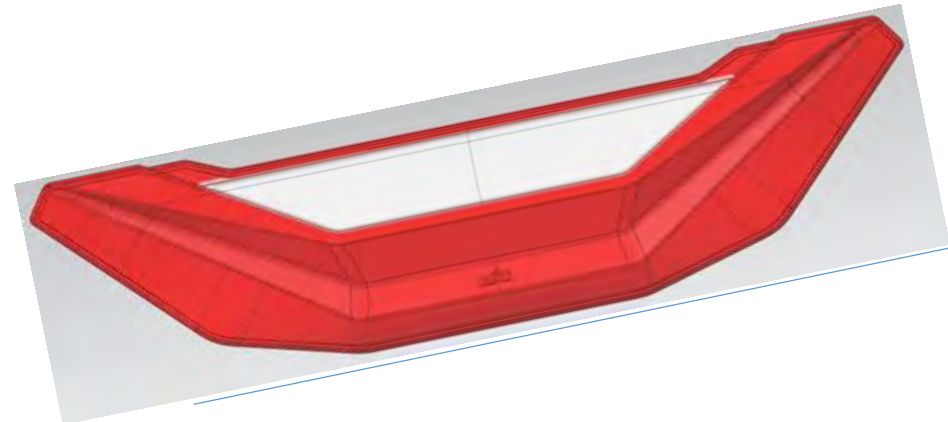
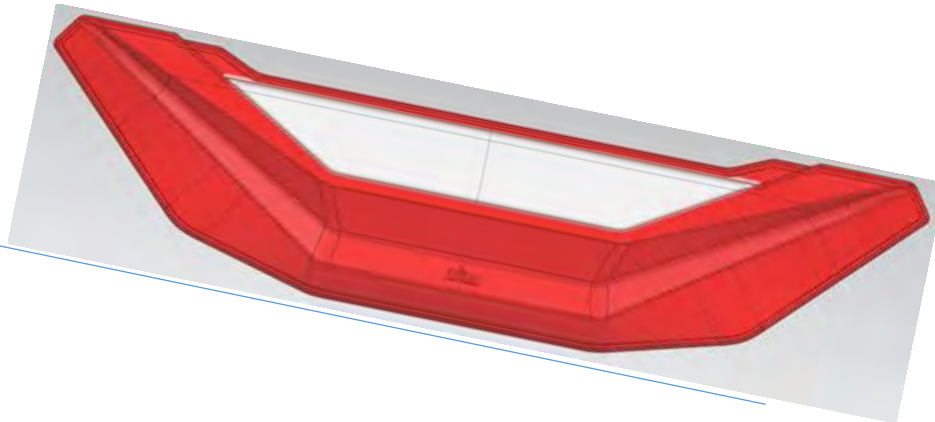
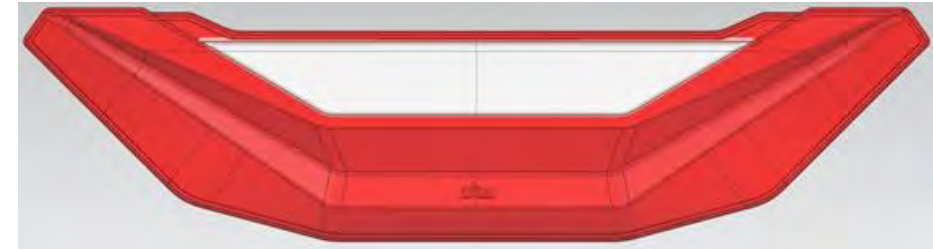
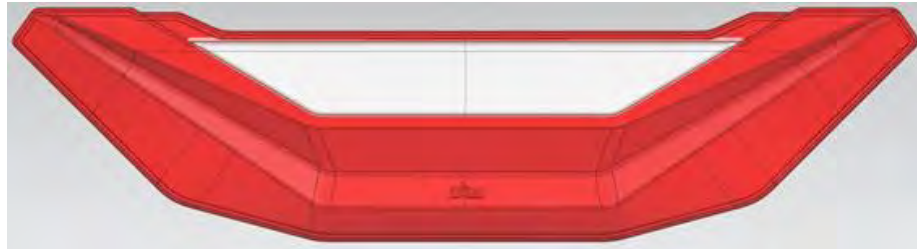
# Specification

## L 3600 - Full LED rear combination light

Mounting position „Horizontal“

With sequential Turn Indicator

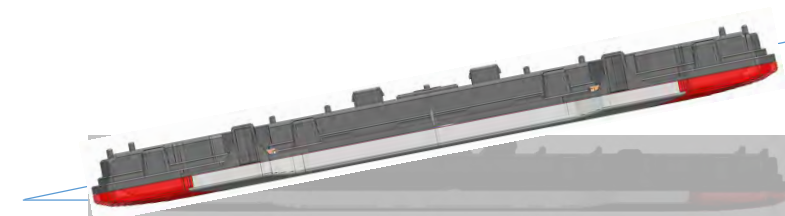
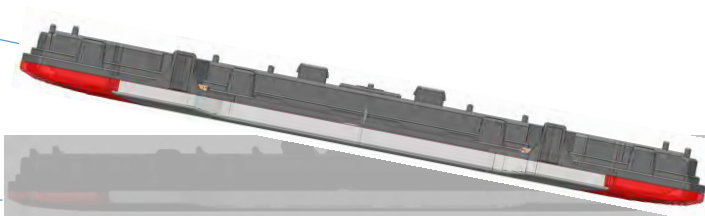
Vehicle central axis



0° to 20°

0° to 20°

Top view



0° to 5°

0° to 5°



# Specification

## L 3600 - Full LED rear combination light

Mounting position „Vertical“

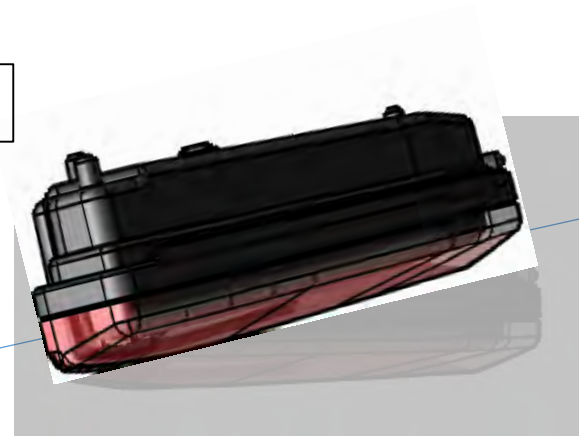
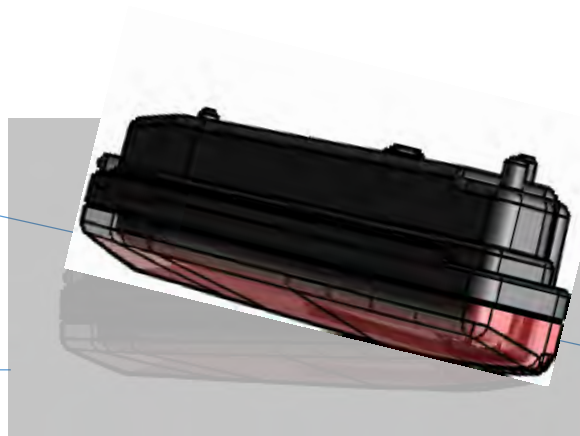
Standard Turn Indicator

Vehicle central axis

Top view

0° to 5°

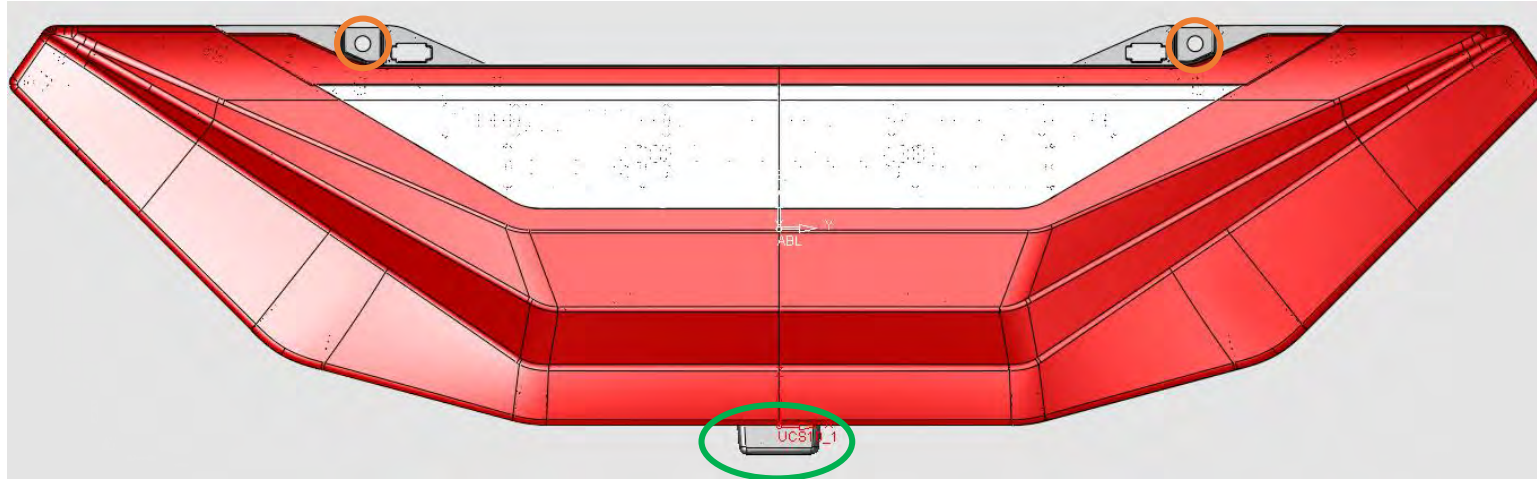
0° to 5°





# Lamp integration / Mounting instructions

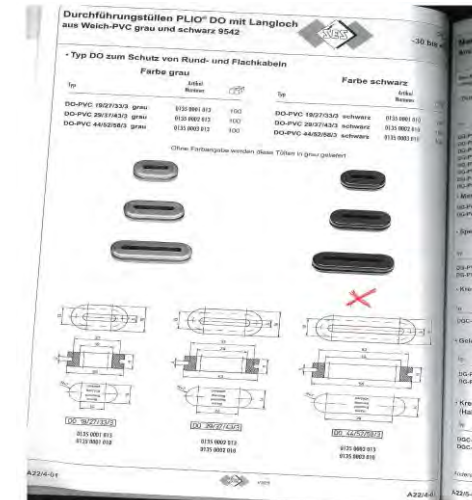
## L 3600 - Full LED rear combination light

8



- 2x Screw for fixing to the vehicle (  )  
1x Latch for slide in rubber grommet (  )

Rubber grommet has to be mounted on the vehicle  
Example for rubber grommet see picture (right)





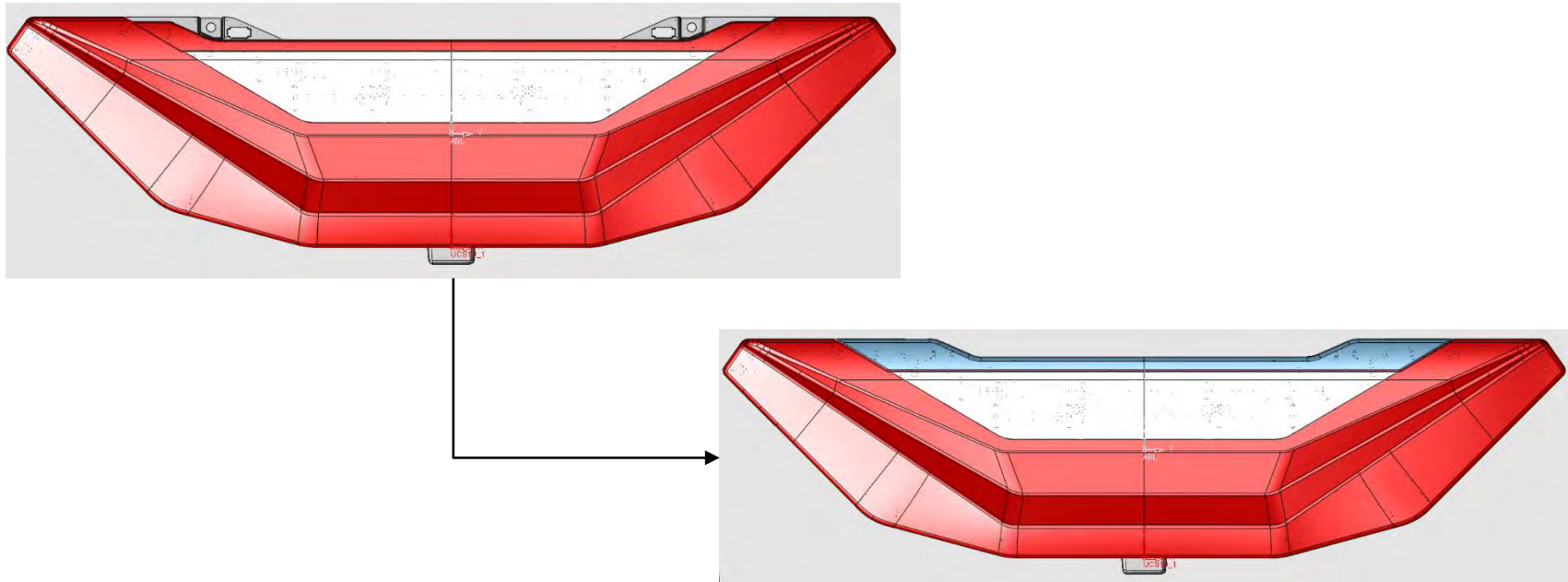
# Lamp integration / Mounting instructions

## L 3600 - Full LED rear combination light

9

### Assembly process:

1. Connect the Main Connectors
2. Slide Latch in rubber grommet
3. Rotate lamp in final mounting position
4. Fix the screw (2x) and the lamp to the vehicle
5. Add the chrom bezel by clipping



# Lamp integration / Mounting instructions

## L 3600 - Full LED rear combination light

Open the Carrier as much as possible for thermal effectiveness (picture just for reference).



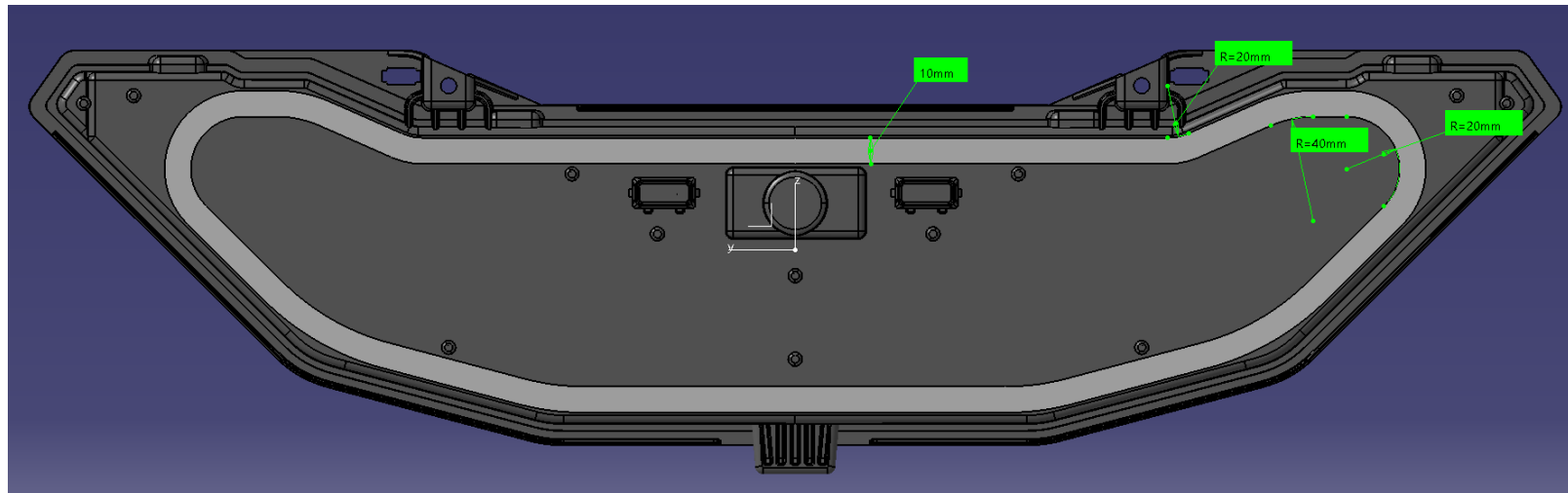
# Sealing of the lamp

## L 3600 - Full LED rear combination light

The lamp itself is sealed.

There is an area for a sealing component running around the lamp on the rear surface (see picture).

The sealing, shown in the picture is only for a better understanding. This will not be part of the lamp. If you need a sealing to the vehicle, we can support you.



# Choose your cover form

## L 3600 - Full LED rear combination light

Standard chrome  
Part number 19.2053.000



Standard black  
Part number 19.2053.100



Other variations on request

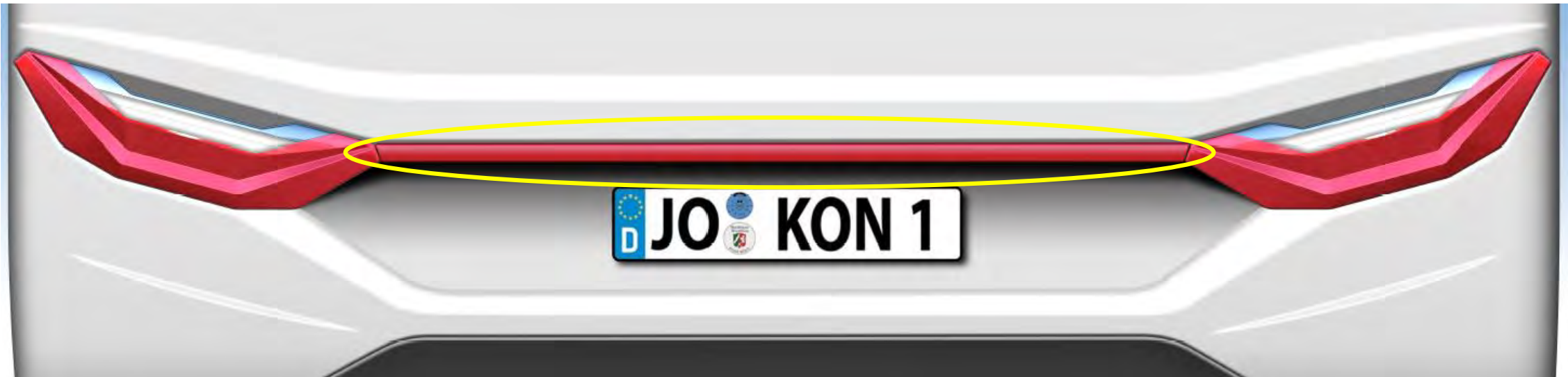


Cover form should be ordered separately.

# Add an individualized Bridge light

L 3600 - Full LED rear combination light

Bridge light on request





# Contact information - Sales

JOKON - gives shape to light!



F.R.A. srl | Via Sallustio 69| 41123 | Modena | Italy | T +39 059 826951

contact → Alberto BERSANI | e-mail: [alberto@fra.it](mailto:alberto@fra.it)